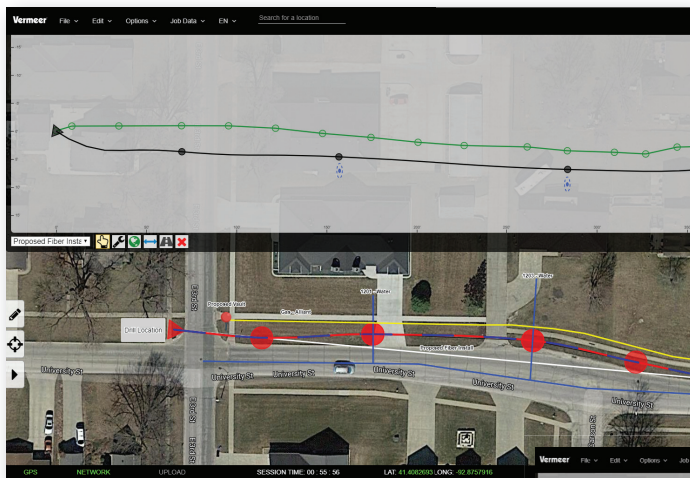


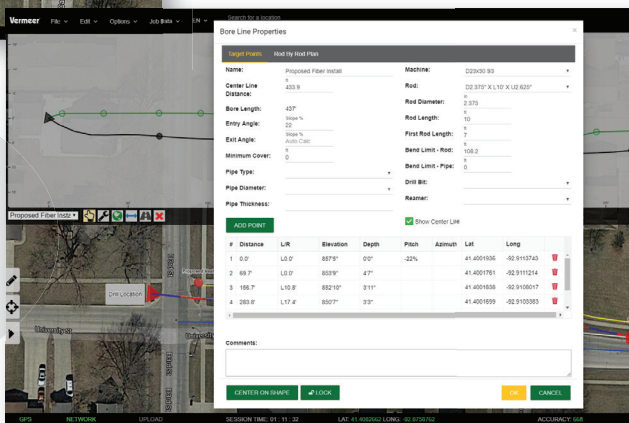
# MORE WAYS TO BE PRODUCTIVE.

## Vermeer Projects Suite

Vermeer Projects is a subscription-based software tool for organizing jobsite information and making planning and installation more efficient. This software creates one digital record of the entire job that can be shared in real time with a computer, tablet or phone.



Subscribers can select from different levels of features offering varying capabilities in job record management. The first level, Vermeer Projects, makes it simple for operations managers to collect, organize and share important job documentation through the cloud. Vermeer Projects +Mapping gives crew leaders the ability to visually capture the jobsite over a Google Maps image, including intended bore path whiteline, pothole locations, locate positions, marked utilities and bore path as-built. Lastly, Vermeer Projects +Mapping +Boreplan adds bore line mapping and rod-by-rod bore planning.



VERMEERSTORE.COM



EQUIPPED TO  
DO MORE.®

## KEY BENEFITS:

### Projects

- **Consolidates** views into one map of the entire jobsite and gathers job information such as permits to create a comprehensive digital plan.
- **Updates** job plan changes into one file that can be shared electronically through the cloud in near real time.
- **Creates** one digital record of the entire job, generates reports for invoicing and keeps records accessible without the hassle of paper files.

### +Mapping (Must have Projects)

- **Collects**, records and shares proposed bore path and marked, existing utilities information to help reduce the risk of error.
- **“White Lines”** the project site using Google Maps imaging, digitizing the mapping process.
- **Creates** detailed, visual plans with marked utilities and as-built information to share with crews and project owners.

### +BorePlan (Must have Projects +Mapping)

- **Allows** operator to generate the rod plan for use onsite and for secure record documentation.
- **Stores** jobsite data, the highest per user storage available.



Vermeer Corporation reserves the right to make changes in product engineering, design and specifications; add improvements; or discontinue manufacturing or distribution at any time without notice or obligation. Equipment shown is for illustrative purposes only and may display optional accessories, features or components specific to their global region. Please contact your local Vermeer dealer for more information on machine specifications. Vermeer Productivity Tools assist users with planning and management functions. Information provided is reliant upon the accuracy and quality of user-provided data. Vermeer, the Vermeer logo and Equipped to Do More are trademarks of Vermeer Manufacturing Company in the U.S. and/or other countries. © 2017 Vermeer Corporation. All Rights Reserved.



# Projects